

# Modern Farmhouse 4

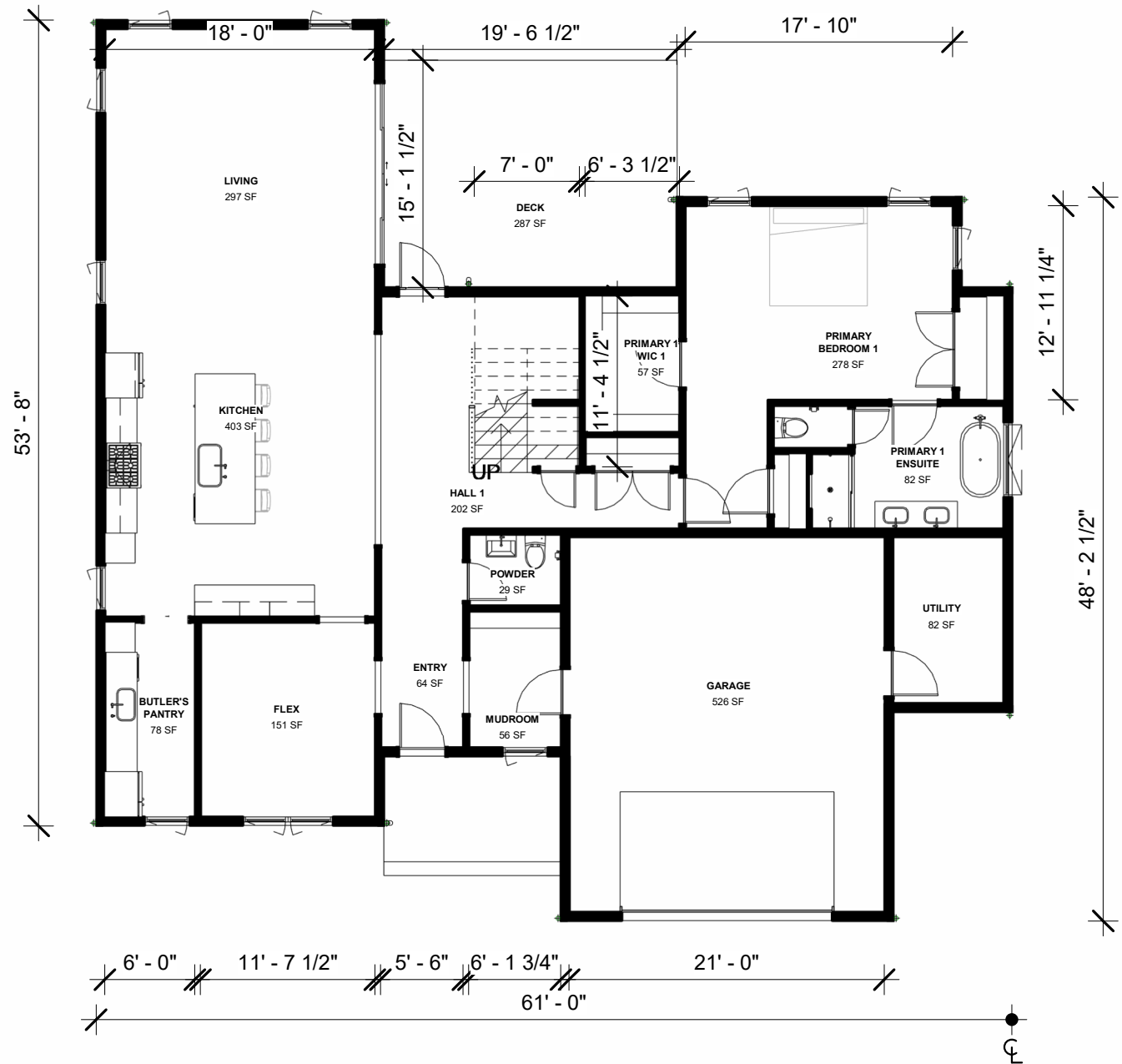
## First Floor Plan

UNDER AIR: 2,942  
TOTAL SF: 3,512  
4 BEDROOMS  
3 BATHS  
POWDER ROOM  
2 CAR GARAGE

SCALE: 3/32" = 1'-0"

KEY FEATURES  
OPEN CONCEPT LIVING  
FIRST FLOOR PRIMARY SUITE

Welcome Homes  
(212) 920-5150  
Welcomehomes.com



\* Size and dimensions are approximate. Square footage calculations are made based on planned dimensions and may vary from the finished square footage of the house as built.

# Modern Farmhouse 4

## Second Floor Plan

UNDER AIR: 2,942  
TOTAL SF: 3,512  
4 BEDROOMS  
3 BATHS  
POWDER ROOM  
2 CAR GARAGE

SCALE: 3/32" = 1'-0"

KEY FEATURES  
OPEN CONCEPT LIVING  
FIRST FLOOR PRIMARY SUITE

Welcome Homes  
(212) 920-5150  
Welcomehomes.com

